



it **clicks** between us

Forbo

**marmoleum<sup>®</sup>**  
*click*

Fun to design. Easy to install.



**marmoleum®** *click*

Fun to design. Easy to install.

753880



**WE KNEW IMMEDIATELY**  
Esther and Karl love their new kitchen: "Marmoleum click provided the finishing touch," says Esther. "We'd been looking for ages for a floor that would bring it all together. Then we saw this, and we knew immediately that we'd found it."

## feel free with Marmoleum **click**

Marmoleum click is a high quality, easy to install flooring system made from natural materials. Available in a wide choice of colours, it is ideal for kitchens, living rooms, hallways, bedrooms, playrooms and studies\*.  
Marmoleum click comes in 90 cm x 30 cm panels and 30 cm x 30 cm squares and features a patented

click system, which guarantees easy, problem-free installation. With Marmoleum click, it really is easy to turn your wildest dreams into a beautiful reality.

\*Marmoleum click is not recommended for rooms that regularly get very wet, such as bathrooms and saunas.



**marmoleum** *click*

Fun to design. Easy to install.

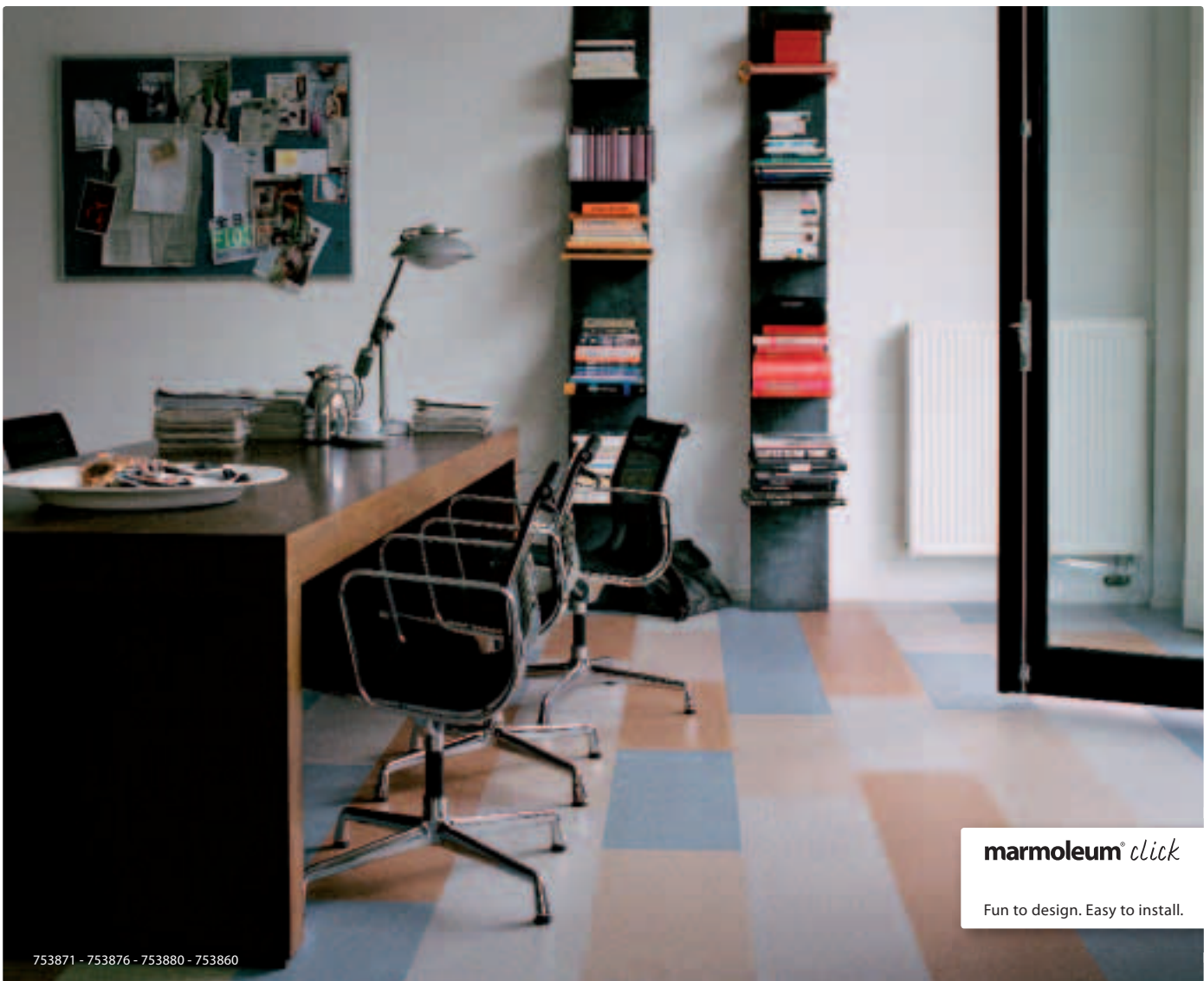
753860 - 753871 - 763858



**marmoleum®** *click*

Fun to design. Easy to install.

753858 - 763880 - 763860



753871 - 753876 - 753880 - 753860

**marmoleum®** *click*

Fun to design. Easy to install.

## express yourself with Marmoleum **click**

Marmoleum click is all about letting you express yourself and making your home unique. Just decide what kind of interior feels right to you. Contemporary, traditional, minimalist, cosy? How about

relaxing, spacious, vibrant or bright? With Marmoleum click you can design a tailor-made floor for every room. One that makes your furniture and decorations shine and allows you to really express who you are.

**IT HAD TO FEEL RIGHT**  
"This floor feels just right," says Esther of her new working space. "I wanted an environment that would encourage me to get things done, but which was also mine – not too much like an office! It had to feel right, and this does."





**marmoleum®** *click*

Fun to design. Easy to install.

753209 - 753872





753209 - 753872

**marmoleum** *click*

Fun to design. Easy to install.



**marmoleum®** *click*

Fun to design. Easy to install.

753860 - 753858 - 753877



#### MARMOLEUM CLICK JUST CLICKED

When it came to redecorating the kitchen, Sandra and Simon found that "Marmoleum click just clicked," laughs Sandra. "I love the look and feel, plus it's so easy to clean and the natural material inhibits bacteria. That's very reassuring when you have a young family."

## same room, endless effects

Marmoleum click lets you create endless effects. Quiet shades for a neutral background. Cheerful colours to brighten up your home. Fresh colours that soothe. Light ones to make a room look bigger. Warm colours to make difficult spaces cosy.

And you can get even more creative by mixing and

matching. Decide on the atmosphere and colours and unleash your creativity. Then make a sketch based on the actual size of your room (and don't forget to take the width of the panels into account) and create your unique design. That's all there is to it.



**marmoleum** *click*

Fun to design. Easy to install.

753858 - 763877



marmoleum® *click*

Fun to design. Easy to install.

753874 - 753876 - 753870 - 753871



753874 - 753876- 753870 - 753871

## the only rule is no rules

There are no rules when it comes to designing your Marmoleum click floor, but to help you make the most of all the possibilities, here are a few tips.

Consider the size and shape of your room. A dark colour or busy pattern may make a small or long, narrow room look even smaller. Stripes or diagonal patterns can create optical effects that completely transform a space. Another point is what the room is used for.

Living rooms and bedrooms often suit darker, warmer colours, while light, crisp colours may work better in a kitchen.

And then there's furniture: the more you have in a room, the less of the floor you can see, in which case it may be best to keep the design simple. On the other hand, you can achieve amazing effects with a bright, punchy pattern!



### I COULDN'T RESIST

"I found Max in a stray dogs' home – and I couldn't resist," says Sandra. "I saw him sitting there and then he sat up with his head to one side and I just knew I couldn't leave him there. Luckily, with this floor it's easy to wipe away his muddy paw prints!"



marmoleum® *click*

Fun to design. Easy to install.

763879 - 763876 - 763202

**SHE LOVES THE COLOURS**

"Joanna loves being in our room now", says Sandra. "You can't keep her out since we put this floor down.

She says she likes the colours and that it feels nice. There's certainly no doubt about what her favourite colour of nail varnish is!"





753879 - 753202

**marmoleum** *click*

Fun to design. Easy to install.



**marmoleum®** *click*

Fun to design. Easy to install.

763866 - 763872 - 763878 - 763860

**NO COMPETITION, REALLY**  
"Daniel chose this floor," says Simon, "though we did insist on Marmoleum click. Why? We wanted something tough but which felt comfortable, and was easy to keep clean. Plus, there are plenty of colours to choose from, so it was no competition, really."



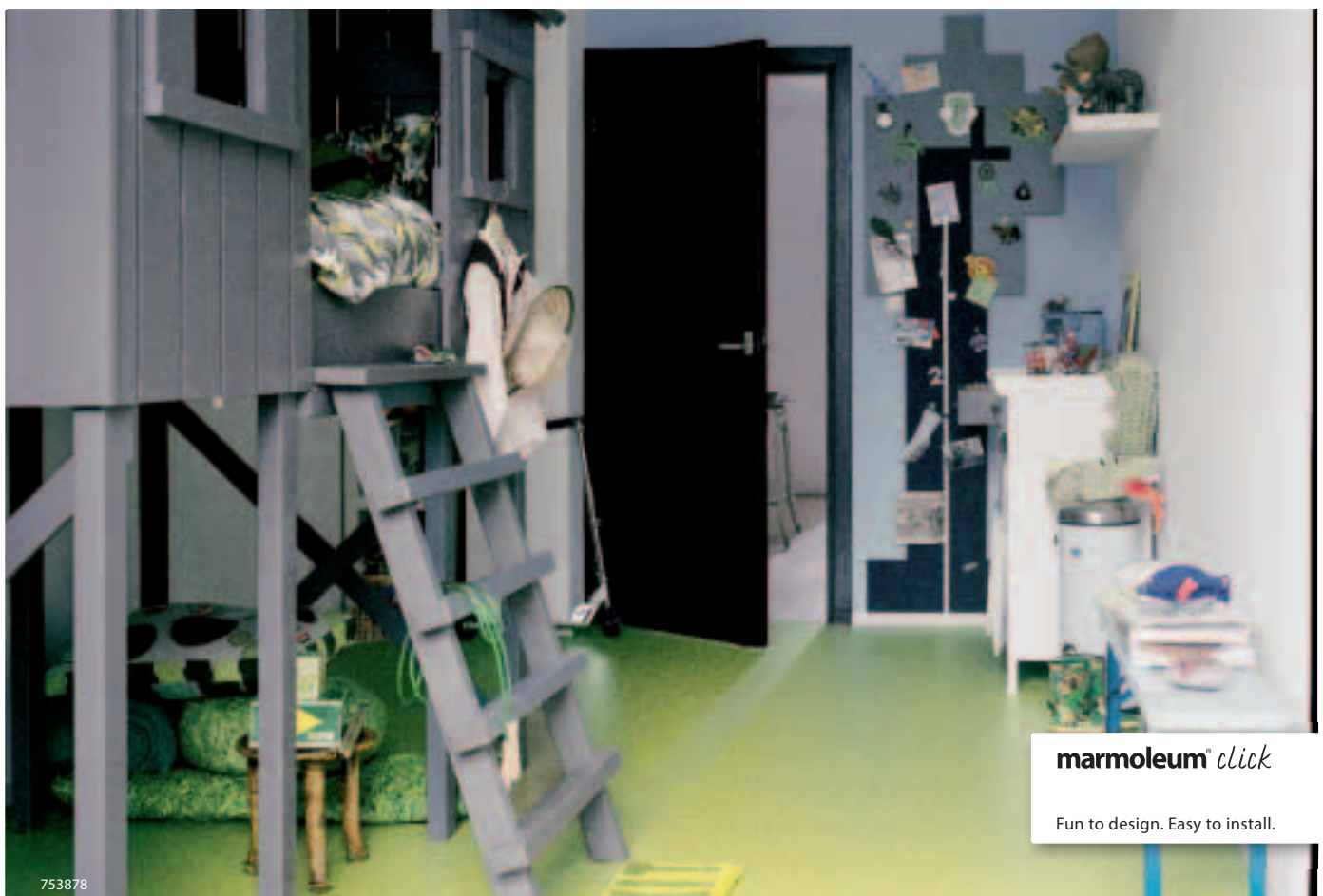
## a floor that's practical and durable

Marmoleum click is extremely durable and extremely simple to care for. The smooth surface is easy to clean – a dry-cloth sweeper for dust and a neutral cleaner and damp cloth for any spots – while thanks to the way it is made, it can't fade.

Marmoleum click also improves life for people with asthmatic allergies and similar disorders. Not only it is

anti-static (which is why it's so easy to keep dust-free), but its lab-proven bacteriostatic properties inhibit micro-organisms as well.

And because Marmoleum is a natural product, it reaches room temperature quickly, ensuring your house is snug and warm. It can even be used with under-floor heating.



753878

**marmoleum** *click*

Fun to design. Easy to install.

## making the **click** is so easy

Marmoleum click is a snap to install. Slot it together with the simple locking system and literally click the panels into place. Because Marmoleum click panels are wide and leave no seams when connected, it's easy to get a nice smooth finish in no time. And there's no need to mess around with glue or waiting for it dry. Lay it, walk on it. Of course, your Marmoleum click retailer can

also fit your floor, if you prefer.

Marmoleum click can be installed over every type of surface. The only time extra preparation is needed is if the floor or underlay is very uneven (differences of 2 mm or more).

We also offer a range of matching skirting finishes to give your room that extra touch.



# everything you need

## Simple to fit

Marmoleum click is available as panels measuring 90 cm x 30 cm. The panels are approximately 9.8 mm thick and are supplied in boxes of 7 – about 1,89 square metres.

Marmoleum click is also available in 30 x 30 cm squares, which enables you to create different effects. Like the panels, each square is approximately 9.8 mm thick and they come in boxes of 7 – about 0.63 square metres. You can choose, one, the other, or a combination.

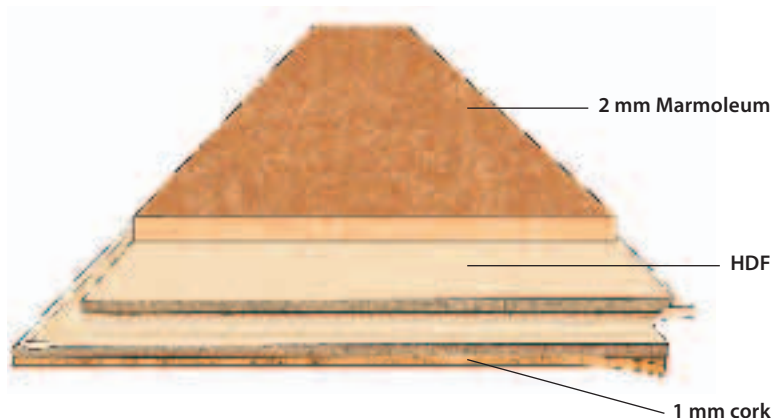
## The finishing touch

We also supply a choice of skirting finishes to complete the look of your room. For more information please contact your local Marmoleum click dealer.

## Installation aids

To make fitting your floor truly easy, we can also provide the following installation aids:

- Wedge
- Tapping block



## Where to buy Marmoleum click

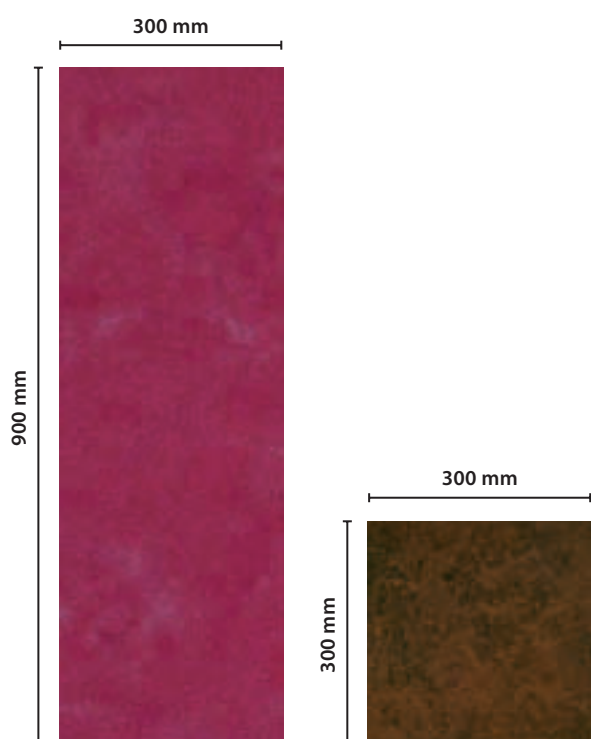
Marmoleum click is available from leading interior furnishing shops and selected parquet flooring suppliers. They can give you expert advice, a detailed price quotation and information on installing your floor. For the address of your nearest supplier, visit our web site at [www.XXXXXXXXXXXXXX](http://www.XXXXXXXXXXXXXX) or call XXXXXXXXXXXX. All the latest Marmoleum collections, including Marmoleum click, can also be viewed online. Go to [www.forbo-flooring.XX](http://www.forbo-flooring.XX) to view colour samples, ideas on combinations and more, including seeing how your room would look with your very own Marmoleum click floor design!

## Long-lasting care

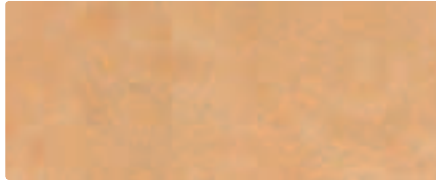
Marmoleum click has a strong protective finish that makes cleaning and maintenance very simple indeed. Wiping away dust with a dry sweeper is a fast and easy way to remove loose dirt. To protect your floor, simply apply Forbo Monel. Monel absorbs wet dirt, and will be removed next time you clean. Regular use of Monel will ensure your floor retains its as-new appearance.

## Free sample service

Would you like to receive a free colour sample? Please call XXXXXXXXXXXX or order one by visiting our web site at [www.XXXXXXXXXXXXXX](http://www.XXXXXXXXXXXXXX).



# colours



van gogh  753173  763173



sahara  753174  763174



red copper  753870  763870



natural corn  753846  763846



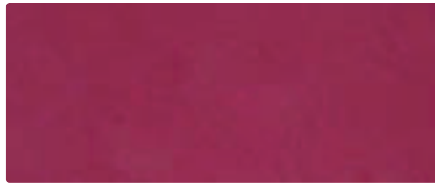
henna  753203  763203



wine barrel  753202  763202



caribbean  753038  763038



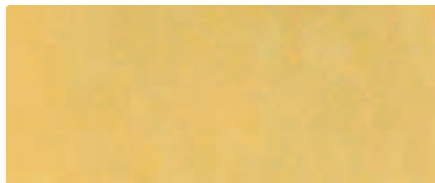
raspberry  753879  763879



bleeckerstreet  753127  763127



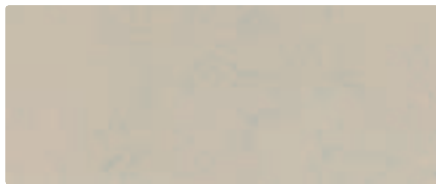
barbados  753858  763858



pineapple  753877  763877



lime  753878  763878



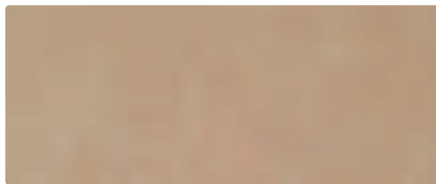
silver shadow  753860  763860



sky blue  753880  763880



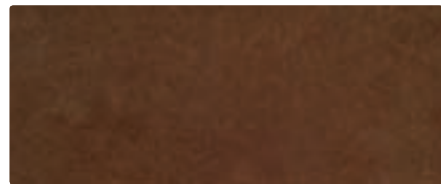
lapis lazuli  753205  763205



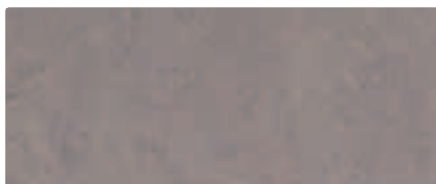
silver birch  753871  763871



camel  753876  763876



walnut  753874  763874



eternity  753866  763866



volcanic ash  753872  763872



raven  753209  763209



## make the **click** with nature

Marmoleum click's colours are inspired by nature, but its beauty is more than skin deep. The top layer is linoleum, a natural, ecologically produced material made from linseed oil, rosin, limestone and environmentally friendly pigments. Behind this is a layer of water-repellent HDF (High Density Fibreboard), which is backed by a layer of cork. Because of the way it's made, don't be surprised if your

Marmoleum click has a yellowish film on it when it's delivered. This is oxidised linseed oil, which colours the surface when it's dried. The film will disappear (usually within 24 hours) as soon as your floor is exposed to the light. Also, because linoleum is a natural product, there may be very slight colour and structural differences between production batches, samples and the delivered goods.



Forbo Flooring  
P.O. Box 13  
1560 AA Krommenie  
The Netherlands  
Tel. +31 75 647 74 77  
Fax +31 75 647 77 01  
contact@forbo.com  
www.forbo-flooring.com



Forbo Flooring, part of the Swiss Forbo Group, offers a full range of flooring products for both commercial and residential markets. High quality linoleum, vinyl and hardwood floors combine functionality, colour and design – giving you total flooring solutions for any environment.

**forbo**

creating better environments